

Windows 10 Professional 64 Bit DVD product key with Microsoft safety code

Our Product Introduction

for more products please visit us on computersoftware-systems.com

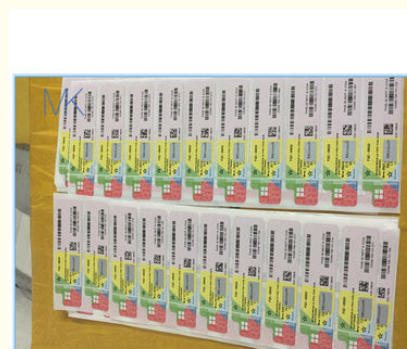
Basic Information

- Place of Origin: USA / Customize
- Brand Name: Microsoft
- Certification: Microsoft Certified
- Model Number: Windows 10 product key
- Minimum Order Quantity: 10 pieces
- Price: Negotiable
- Packaging Details: sticker
- Delivery Time: Within 48 hours
- Payment Terms: T/T, Western Union, MoneyGram,
- Supply Ability: 10000 pieces / week



Product Specification

- Media: Not With
- Region: USA
- Safety Code: Yes
- Multi-languages: Support
- Shipment: DHL Or Email
- Operating Systems: Windows 10
- Highlight: windows 10 pro 64 bit retail,
windows 10 pro product key



Product Description

Windows 10 Professional 64 Bit DVD product key with Microsoft safety code

Important notes:

Windows 10 Home users will automatically receive updates from Windows Update when they are available. Windows 10 Pro and Windows 10 Enterprise users will have the ability to postpone updates. The amount of time by which Windows 10 Pro users can postpone updates is limited.

Small storage devices, like devices with 32 GB hard drives or older devices with full hard drives, may need additional storage to complete the upgrade. You'll see instructions telling you what to do during the upgrade. You may need either to remove unneeded files from your device or insert a USB flash drive to complete the upgrade.

Some devices with either little free space available or smaller hard drives, like 32 GB storage PCs, may have little free space available after upgrading. You may free up disk space and easily delete files, like temporary files or your previous version of Windows, within the Storage system setting. Files for the previous version of Windows give you the option to remove Windows 10 and go back to your previous version of Windows. These files are automatically deleted 10 days after you upgrade. You can delete them now to free up space.

An internet connection is required to perform the upgrade. Windows 10 is a large file – about 3 GB – and Internet access (ISP) fees might apply.

To check for device compatibility and other important installation information, visit your device manufacturer's website. Manufacturer contact information can be found on the Contact Information page.

The upgradeability of a device includes factors beyond the system specification. This includes driver and firmware support, application compatibility and feature support, regardless of whether or not the device meets the minimum system specification for Windows 10.

Support may vary by device. Find more information on the Windows Lifecycle page.

If your PC or tablet is currently running Windows 7 SP1 or Windows 8.1 Update, you can check to see if it meets the requirements by using 'Check my PC' in the Get Windows 10 app. To open the Get Windows 10 app, click on the small Windows icon found at the right end of the taskbar. If you don't see it, visit our Windows 10 Q&A page for more information.

Many applications, files and settings will migrate as part of the upgrade. However, some applications or settings may not migrate.

For anti-malware applications, Windows will check to see if your anti-malware subscription is current (not expired) and compatible during the upgrade.

If the anti-malware application is compatible and current, your application will be preserved during the upgrade to Windows 10.

If the anti-malware application is incompatible, Windows will uninstall your application while preserving your settings. After the upgrade is complete, if your anti-malware provider has informed Microsoft that it has made a compatible version available for your active subscription, Windows will notify you to install the latest available version with the settings that were set prior to upgrade.

If your anti-malware subscription is not current (expired), Windows will uninstall your application and enable Windows Defender.

Some applications that came from your OEM may be removed prior to upgrade.

For certain third party applications, the "Get Windows 10" app will scan for application compatibility. If there is a known issue that will prevent the upgrade, you will be notified of the list of applications with known issues. You can choose to accept and the applications will be removed from the system prior to upgrade. Please make sure that you copy the list before you accept the removal of the application.

The safety settings for Microsoft Family Safety child users with local accounts (accounts tied to the machine) will not be migrated to Windows 10 during the upgrade. This means that after the upgrade to Windows 10 is complete, parents would need to setup safety settings for the child user along with a Microsoft account if they do not have one.

Some apps and content sold separately. Feature and app availability and experience may vary by device and market.

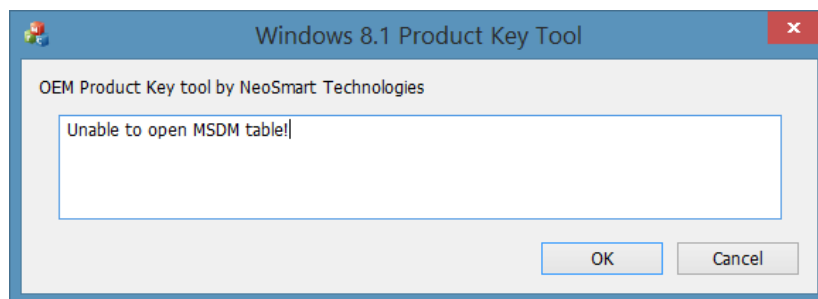
Windows 10 Product Key Tool

Windows 10 Product Key Tool is a newly released utility from the developer behind the very popular EasyBCD software. With Windows 10 Product Key Tool, one can easily recover Windows 7, Windows 8, Windows 8.1, and Windows 10 product license keys from the BIOS or EFI in a jiffy.

To read Windows 7, Windows 8.1, or Windows 10 product key from the BIOS or UEFI, simply run OEM Product Key Tool on your PC. Upon running the tool, it will automatically scan your BIOS or EFI and display the product key. After recover the key, we recommend you store the product key in a safe location.

Windows 10 Product Key Tool is compatible with both 32-bit and 64-bit versions of Windows 7, Windows 8.1, and Windows 10. Visit the following page to download the latest version of OEM Product Key Tool.

Note that you might get “Unable to open MSDM table!” message if the product key isn’t present in your PC’s BIOS/EFI. If you’re getting this message, the product key sticker must be located somewhere on your PC. Look for it!



System requirements

If you want to upgrade to Windows 10 on your PC or tablet, here’s what it takes.

Processor: 1 gigahertz (GHz) or faster processor or SoC

RAM: 1 gigabyte (GB) for 32-bit or 2 GB for 64-bit

Hard disk space: 16 GB for 32-bit OS 20 GB for 64-bit OS

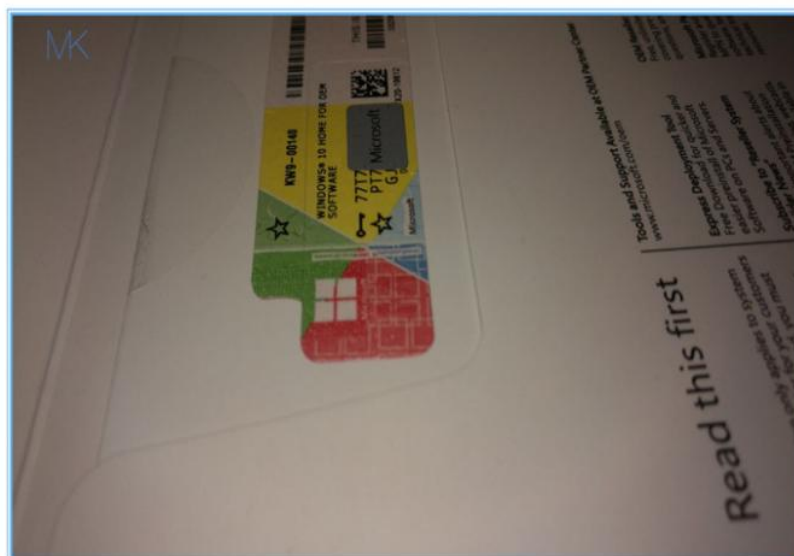
Graphics card: DirectX 9 or later with WDDM 1.0 driver

Display: 800x600

Windows 10 full localization languages

Arabic (Saudi Arabia), Bulgarian (Bulgaria), Chinese (Simplified, China), Chinese (Hong Kong), Chinese (Traditional, Taiwan), Croatian (Croatia), Czech (Czech Republic), Danish (Denmark), Dutch (Netherlands), English (United Kingdom), English (United States), Estonian (Estonia), Finnish (Finland), French (France), French (Canada), German (Germany), Greek (Greece), Hebrew (Israel), Hungarian (Hungary), Italian (Italy), Japanese (Japan), Korean (Korea), Latvian (Latvia), Lithuanian (Lithuania), Norwegian, Bokmål (Norway), Polish (Poland), Portuguese (Brazil), Portuguese (Portugal), Romanian (Romania), Russian (Russia), Serbian (Latin, Serbia), Slovak (Slovakia), Slovenian (Slovenia), Spanish (Spain, International Sort), Spanish (Mexico), Swedish (Sweden), Thai (Thailand), Turkish (Turkey), Ukrainian (Ukraine)

	Win 10 Home	Win 10 Pro
Create and join a domain (work network)	No	Yes
BitLocker	No	Yes
Group policy management	No	Yes
Remote Desktop	No	Yes
Hyper-V (virtualisation)	No	Yes
Assigned Access	No	Yes
Enterprise Mode Internet Explorer	No	Yes
Windows Store for Business	No	Yes
Trusted Boot	No	Yes
Windows Update for Business	No	Yes
Max. supported RAM	128 GB	2 TB





86-13539872669



sales@hkminko.com



computersoftware-systems.com

Huaqiang North ,Futian district,Shenzhen City,China