

## Genuine Microsoft Windows Server 2008 R2 Standard Upgrade To Enterprise 25 Client 64bit English

Our Product Introduction

for more products please visit us on [computersoftware-systems.com](http://computersoftware-systems.com)

### Basic Information

- Place of Origin: Ireland
- Brand Name: Microsoft
- Certification: Microsoft Certified
- Model Number: windows server 2008
- Minimum Order Quantity: 5 pieces
- Price: Negotiable
- Packaging Details: Factory Sealed Retail box / OEM
- Delivery Time: 2-3 work days
- Payment Terms: T/T, Western Union, MoneyGram,
- Supply Ability: 3000 pieces / week



### Product Specification

- Version: Standard/Enterprise R2 OEM
- Language: English ( Option)
- Packing: OEM/Retail
- DVD: 64Bit
- Payment: Ok
- Shipment: DHL First
- Highlight: windows server 2008 r2 standard,  
windows server standard 2008



## Product Description

### Genuine server 2008 r2 standard upgrade to enterprise 25 client 64bit English

#### Windows Server 2008 Activation

As mentioned previously it is not necessary to enter a key at this point in order to run Windows Server 2008. Failure to enter an activation key simply means that the operating system will run in trial mode which can only be extended for a total of 270 days. If you have an activation key enter it here. Alternatively click on the Next button to proceed to the next stage of the installation. If an activation key was not entered a warning dialog will appear stating that it may be necessary to re-install Windows at a later date (i.e. when the trial ends) resulting in lost data. In practice it is possible to perform the activation before the trial ends without the need to re-install. If presented with this dialog click "No" to proceed.

If an activation key was not entered the next screen will ask that the required Windows Server 2008 Edition be selected. Select the desired edition, check the box to confirm the selection and click Next to proceed. If an activation key was entered the installer already knows which edition to install. Note that Core versions of each edition are available. The core installation is a minimal installation of the operating system with no GUI interface and only a subset of services available by default. This configuration is intended for headless servers and situations where the smallest possible attack surface is required. Read and agree to the license terms and proceed to the next screen where the options to upgrade or perform a clean installation are provided. If the installer was invoked by booting from the DVD, or the host operating system is not suitable for upgrade only the clean installation option will be provided.

#### Windows Server 2008 Compatibility Report

Assuming that the installation was launched from within a compatible operating system, the Upgrade option will be provided. Click on this option to proceed and carefully read the Compatibility Report to get information about any potential problems that may be encountered after the upgrade. Having read the report click Next to proceed. At this point the installation will begin and continue until completed.

#### Accessing the Command Prompt during Installation

At any point during the setup process (except when the installation is actually being performed) Shift+F10 may be pressed to gain access to the command-prompt. From within this command prompt window most of the standard Windows Server 2008 command-line tools are available allowing tasks to be performed that might otherwise not be possible from within the setup interface. A full list of available commands and respective descriptions can be found in the chapter entitled Windows Server 2008 Command-line Tools.

#### Windows Server 2008 Features Matrix

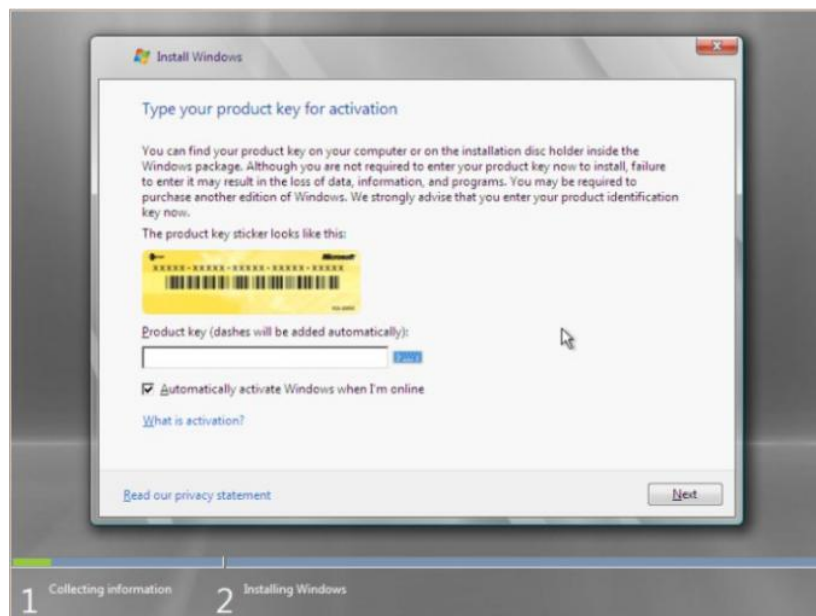
Feature	Enterprise	Datacenter	Standard	Web	Itanium
ADFS Web Agent	Yes	Yes	Yes	No	No
Directory uIDM	Yes	Yes	Yes	No	No
Desktop Experience	Yes	Yes	Yes	Yes	No
Windows Clustering	Yes	Yes	No	No	Yes
Windows Server Backup	Yes	Yes	Yes	Yes	Yes
Windows Network Load Balancing (WNLB)	Yes	Yes	Yes	Yes	Yes
Simple TCP/IP Services	Yes	Yes	Yes	No	Yes
SMTP	Yes	Yes	Yes	Yes	No
Subsystem for Unix-Based Applications (SUA)	Yes	Yes	Yes	No	Yes
Telnet Client	Yes	Yes	Yes	Yes	Yes
Telnet Server	Yes	Yes	Yes	Yes	Yes
Microsoft Message Queuing (MSMQ)	Yes	Yes	Yes	No	Yes
RPC Over HTTP Proxy	Yes	Yes	Yes	No	Yes
Windows Internet Naming Service (WINS)	Yes	Yes	Yes	No	No
Wireless Client	Yes	Yes	Yes	No	No
Windows System Resource Manager (WSRM)	Yes	Yes	Yes	Yes	Yes
Simple SAN Management	Yes	Yes	Yes	No	No
LPR Port Monitor	Yes	Yes	Yes	No	No
The Windows Foundation Components for WinFX	Yes	Yes	Yes	Yes	Yes
BITS Server Extensions	Yes	Yes	Yes	No	Yes
iSNS Server Service	Yes	Yes	Yes	Yes	No
BitLocker Drive Encryption	Yes	Yes	Yes	No	Yes
Multipath IO	Yes	Yes	Yes	No	Yes
Removable Storage Management	Yes	Yes	Yes	No	Yes
TFTP	Yes	Yes	Yes	No	Yes
SNMP	Yes	Yes	Yes	Yes	Yes
Server Admin Pack	Yes	Yes	Yes	Yes	No
RDC	Yes	Yes	Yes	No	Yes
Peer-to-Peer Name Resolution Protocol	Yes	Yes	Yes	Yes	Yes
Recovery Disk	Yes	Yes	Yes	Yes	Yes
Windows PowerShell	Yes	Yes	Yes	Yes	Yes

## Windows Server 2008 System Requirements:

This software is intended for evaluation and deployment planning purposes only. If you plan to install the software on your primary computer, it is recommended that you back up your existing data prior to installation.  
To use Windows Server 2008, you need:

Component	Requirement
Processor	<ul style="list-style-type: none"><li>• Minimum: 1 GHz (x86 processor) or 1.4 GHz (x64 processor)</li><li>• Recommended: 2 GHz or faster</li></ul> <b>Note:</b> An Intel Itanium 2 processor is required for Windows Server 2008 for Itanium-Based Systems.
Memory	<ul style="list-style-type: none"><li>• Minimum: 512 MB RAM</li><li>• Recommended: 2 GB RAM or greater</li><li>• Maximum (32-bit systems): 4 GB (Standard) or 64 GB (Enterprise and Datacenter)</li><li>• Maximum (64-bit systems): 32 GB (Standard) or 1 TB (Enterprise and Datacenter) or 2 TB (Itanium-Based Systems)</li><li>• Minimum: 10 GB</li></ul>
Available Disk Space	<ul style="list-style-type: none"><li>• Recommended: 40 GB or greater</li></ul> <b>Note:</b> Computers with more than 16 GB of RAM will require more disk space for paging, hibernation, and dump files.
Drive	DVD-ROM drive
Display and Peripherals	<ul style="list-style-type: none"><li>• Super VGA (800 x 600) or higher-resolution monitor</li><li>• Keyboard</li><li>• Microsoft Mouse or compatible pointing device</li></ul>

Actual requirements will vary based on your system configuration and the applications and features you choose to install. Processor performance is dependent upon not only the clock frequency of the processor, but the number of cores and the size of the processor cache. Disk space requirements for the system partition are approximate. Itanium-based and x64-based operating systems will vary from these disk size estimates. Additional available hard-disk space may be required if you are installing over a network. For more information, see the Windows Server product site.



Minko Software Service Co. LTD



86-13539872669



sales@hkminko.com



computersoftware-systems.com

Huaqiang North ,Futian district,Shenzhen City,China