

## English windows server 2008 r2 enterprise 64bit OEM key window server 2008 editions

### Basic Information

- Place of Origin: Ireland
- Brand Name: Microsoft
- Certification: Microsoft Certified
- Model Number: windows server 2008
- Minimum Order Quantity: 5 pieces
- Price: Negotiable
- Packaging Details: Factory Sealed Retail box / OEM
- Delivery Time: 2-3 work days
- Payment Terms: T/T, Western Union, MoneyGram,
- Supply Ability: 3000 pieces / week



### Product Specification

- Guarantee: Life Time For Activation Items
- Language: English ( Option)
- Lead Time: 1~ 3 Work Days
- DVD: 64Bit
- Sample: Available
- Shipment: DHL First
- Highlight: windows server 2008 r2 standard,  
win server 2008 r2 enterprise



## Product Description

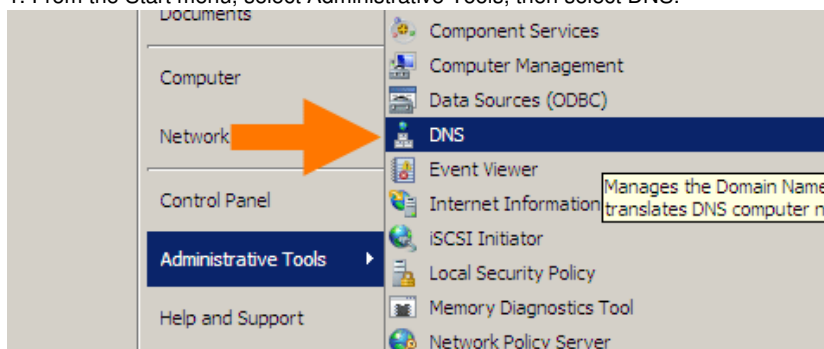
English window server 2008 r2 enterprise,64bit OEM key window server 2008 editions

### Setting up DNS Forwarding for Windows Server 2008 and 2008 R2

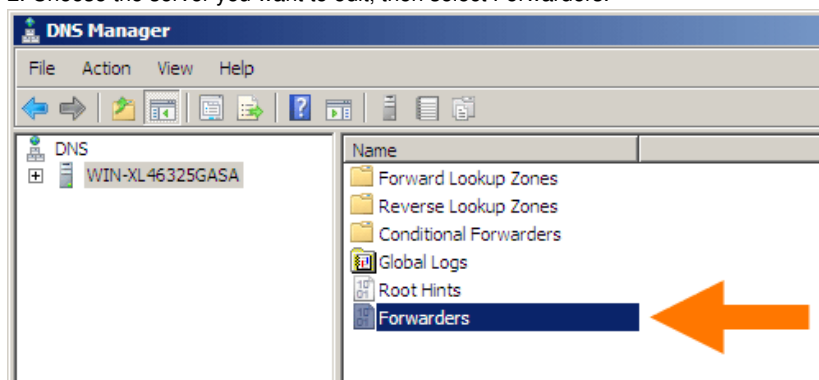
The basic instructions are as follows, with screenshots of what you should expect to see included below.

1. From the Start menu, select Administrative Tools, then select DNS.
2. Choose the server you want to edit, then select Forwarders.
3. Click the edit button.
4. Add OpenDNS addresses in the IP address list.
5. Click OK.
6. Click OK.

1. From the Start menu, select Administrative Tools, then select DNS.



2. Choose the server you want to edit, then select Forwarders.



3. Click the edit button.



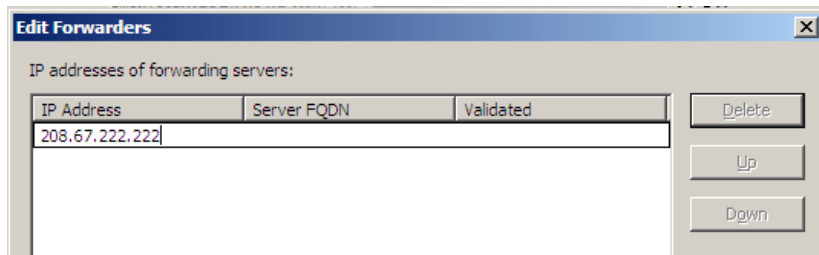
4. Add OpenDNS addresses in the IP address list.

Please write down your current DNS settings before switching to OpenDNS, in case you want to return to your old settings for any reason.

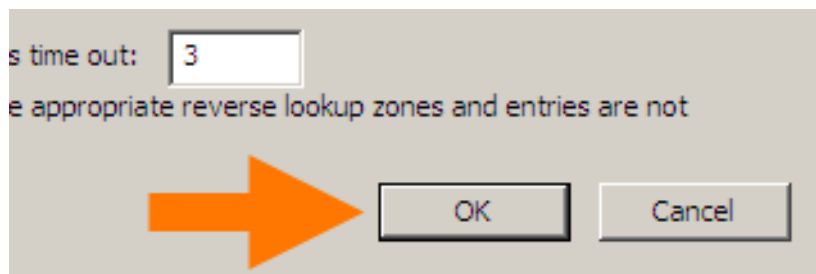
The addresses for Open DNS are:

208.67.222.222

208.67.220.220

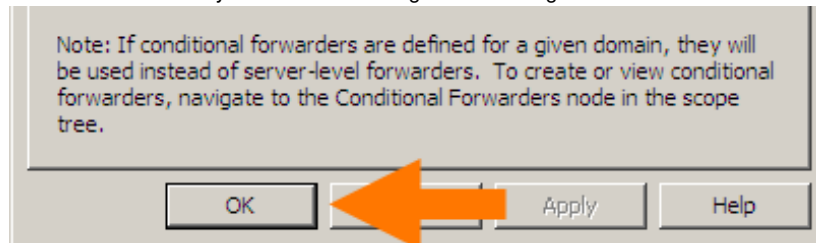


5. Click OK.



6. Click OK.

We recommend that you flush the DNS resolver cache of the server and the DNS caches of the clients/users using the DNS server to ensure that your new DNS configuration settings take immediate effect.



#### Windows Server 2008 Features Matrix

Feature	Enterprise	Datacenter	Standard	Web	Itanium
ADFS Web Agent	Yes	Yes	Yes	No	No
Directory uIDM	Yes	Yes	Yes	No	No
Desktop Experience	Yes	Yes	Yes	Yes	No
Windows Clustering	Yes	Yes	No	No	Yes
Windows Server Backup	Yes	Yes	Yes	Yes	Yes
Windows Network Load Balancing (WNLB)	Yes	Yes	Yes	Yes	Yes
Simple TCP/IP Services	Yes	Yes	Yes	No	Yes
SMTP	Yes	Yes	Yes	Yes	No
Subsystem for Unix-Based Applications (SUA)	Yes	Yes	Yes	No	Yes
Telnet Client	Yes	Yes	Yes	Yes	Yes
Telnet Server	Yes	Yes	Yes	Yes	Yes
Microsoft Message Queuing (MSMQ)	Yes	Yes	Yes	No	Yes
RPC Over HTTP Proxy	Yes	Yes	Yes	No	Yes
Windows Internet Naming Service (WINS)	Yes	Yes	Yes	No	No
Wireless Client	Yes	Yes	Yes	No	No
Windows System Resource Manager (WSRM)	Yes	Yes	Yes	Yes	Yes
Simple SAN Management	Yes	Yes	Yes	No	No
LPR Port Monitor	Yes	Yes	Yes	No	No
The Windows Foundation Components for WinFX	Yes	Yes	Yes	Yes	Yes
BITS Server Extensions	Yes	Yes	Yes	No	Yes
iSNS Server Service	Yes	Yes	Yes	Yes	No
BitLocker Drive Encryption	Yes	Yes	Yes	No	Yes
Multipath IO	Yes	Yes	Yes	No	Yes
Removable Storage Management	Yes	Yes	Yes	No	Yes
TFTP	Yes	Yes	Yes	No	Yes
SNMP	Yes	Yes	Yes	Yes	Yes
Server Admin Pack	Yes	Yes	Yes	Yes	No
RDC	Yes	Yes	Yes	No	Yes
Peer-to-Peer Name Resolution Protocol	Yes	Yes	Yes	Yes	Yes
Recovery Disk	Yes	Yes	Yes	Yes	Yes
Windows PowerShell	Yes	Yes	Yes	Yes	Yes

#### Windows Server 2008 System Requirements:

This software is intended for evaluation and deployment planning purposes only. If you plan to install the software on your primary computer, it is recommended that you back up your existing data prior to installation.

To use Windows Server 2008, you need:

Component	Requirement
Processor	<ul style="list-style-type: none"> <li>Minimum: 1 GHz (x86 processor) or 1.4 GHz (x64 processor)</li> <li>Recommended: 2 GHz or faster</li> </ul> <p><b>Note:</b> An Intel Itanium 2 processor is required for Windows Server 2008 for Itanium-Based Systems.</p>

Component	Requirement
Memory	<ul style="list-style-type: none"> <li>• Minimum: 512 MB RAM</li> <li>• Recommended: 2 GB RAM or greater</li> <li>• Maximum (32-bit systems): 4 GB (Standard) or 64 GB (Enterprise and Datacenter)</li> <li>• Maximum (64-bit systems): 32 GB (Standard) or 1 TB (Enterprise and Datacenter) or 2 TB (Itanium-Based Systems)</li> <li>• Minimum: 10 GB</li> </ul>
Available Disk Space	<ul style="list-style-type: none"> <li>• Recommended: 40 GB or greater</li> </ul> <p><b>Note:</b> Computers with more than 16 GB of RAM will require more disk space for paging, hibernation, and dump files.</p>
Drive	DVD-ROM drive
Display and Peripherals	<ul style="list-style-type: none"> <li>• Super VGA (800 x 600) or higher-resolution monitor</li> <li>• Keyboard</li> <li>• Microsoft Mouse or compatible pointing device</li> </ul>

Actual requirements will vary based on your system configuration and the applications and features you choose to install. Processor performance is dependent upon not only the clock frequency of the processor, but the number of cores and the size of the processor cache. Disk space requirements for the system partition are approximate. Itanium-based and x64-based operating systems will vary from these disk size estimates. Additional available hard-disk space may be required if you are installing over a network. For more information, see the Windows Server product site.



**Minko Software Service Co. LTD**



86-13539872669



sales@hkminko.com



computersoftware-systems.com

Huaqiang North ,Futian district,Shenzhen City,China