



## Online activation Windows Server 2008 Versions Professional 64 Bit DVD OEM Version

### Our Product Introduction

for more products please visit us on [computersoftware-systems.com](http://computersoftware-systems.com)

#### Basic Information

- Place of Origin: Ireland
- Brand Name: Microsoft
- Certification: Microsoft Certified
- Model Number: windows server 2008
- Minimum Order Quantity: 5 pieces
- Price: Negotiable
- Packaging Details: Factory Sealed Retail box / OEM
- Delivery Time: 2-3 work days
- Payment Terms: T/T, Western Union, MoneyGram,
- Supply Ability: 3000 pieces / week



#### Product Specification

- Activate: 100% Activate Globally
- Language: Language Pack
- Lead Time: 1~ 3 Work Days
- Media: 64Bit
- Sample: 5 Pieces
- Shipment: DHL First
- Highlight: **win server 2008 r2 enterprise,  
windows server standard 2008**



## Product Description

English sql server 2008 r2 datacenter, Activation online win server 2008 standard

A series of server operating systems developed by Microsoft Corporation. Windows servers are more powerful versions of their desktop operating system counterparts and are designed to more efficiently handle corporate networking, Internet/intranet hosting, databases, enterprise-scale messaging and similar functions.

The Windows Server name made its debut with the release of Windows Server 2003 and continues with the current release, Windows Server 2008 R2, which shares its codebase with Windows 7. Windows Server 2008 R2 debuted in October 2009 and currently has its first service pack (SP1) in development.

### 10 Steps to Installing the Web Server Role in Windows Server 2008

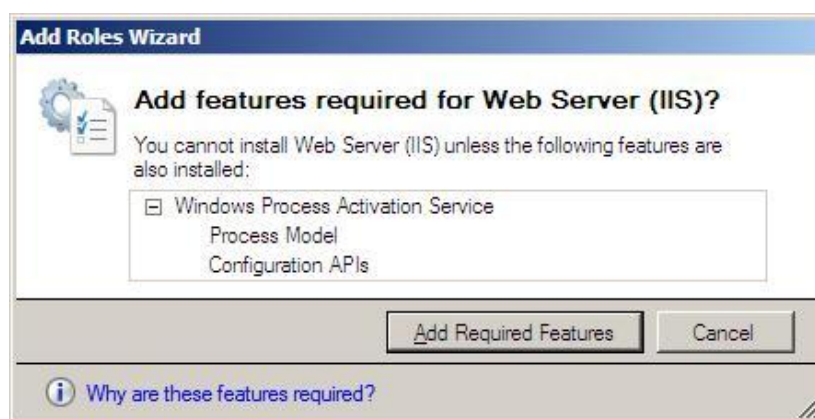
1. Launch the Add Roles Wizard using one of these methods:

On a new Windows Server 2008 installation click **Add Roles** from the Initial Configuration Task Window

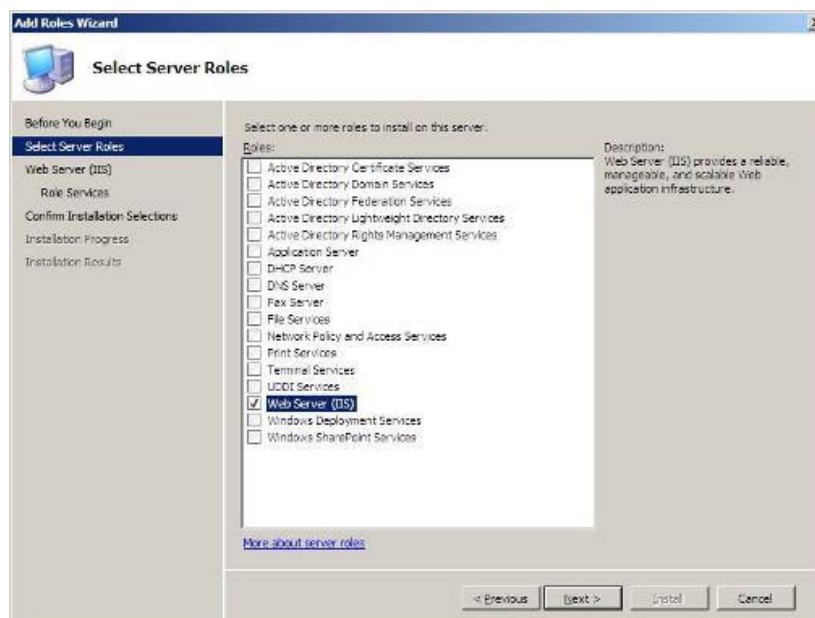
From the Server Manager click **Add Roles** from the Roles Summary or Roles Manager

2. The Add Roles Wizard will begin with some recommendations for the installation; click the **Next** button to proceed.

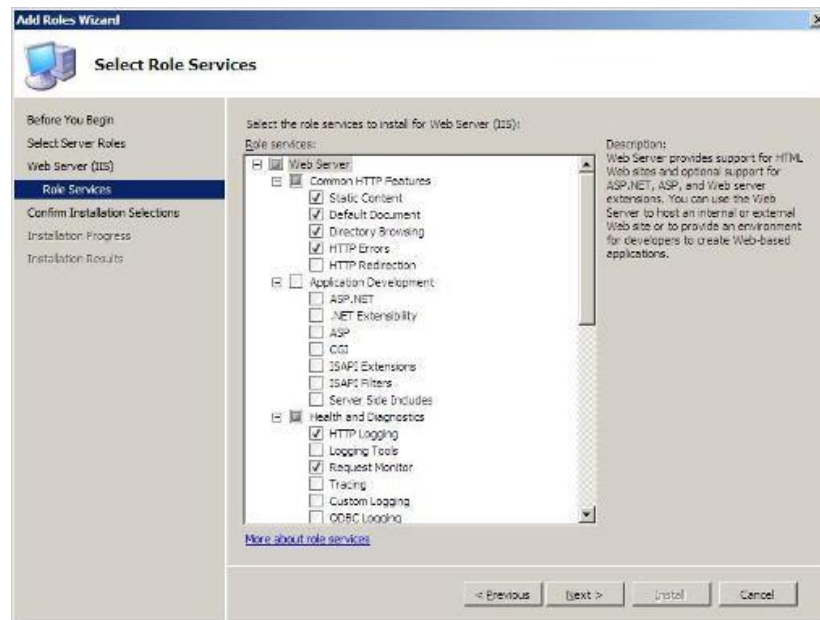
3. You may be prompted to add the Windows Process Activation Service feature, in this case click the **Add Required Features** button.



4. From the Select Server Roles Wizard step check the box labeled **Web Server (IIS)** and click **Next** to continue.

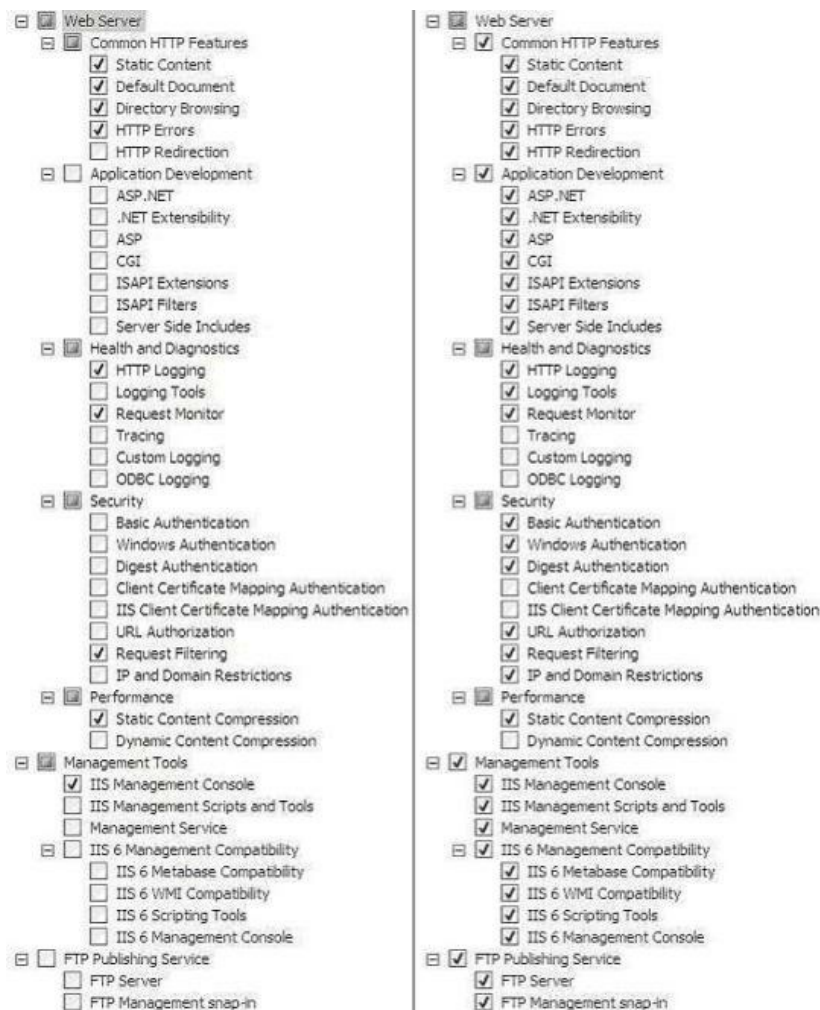


5. After reviewing the Web Server Installation introduction, click the **Next** button to begin selecting the role services to install.



6. The role services selected in the left column are the default for a new Server 2008 installation. In order to install a web server with the functionality outlined in this exercise, check the boxes for the role services selected in the right column.

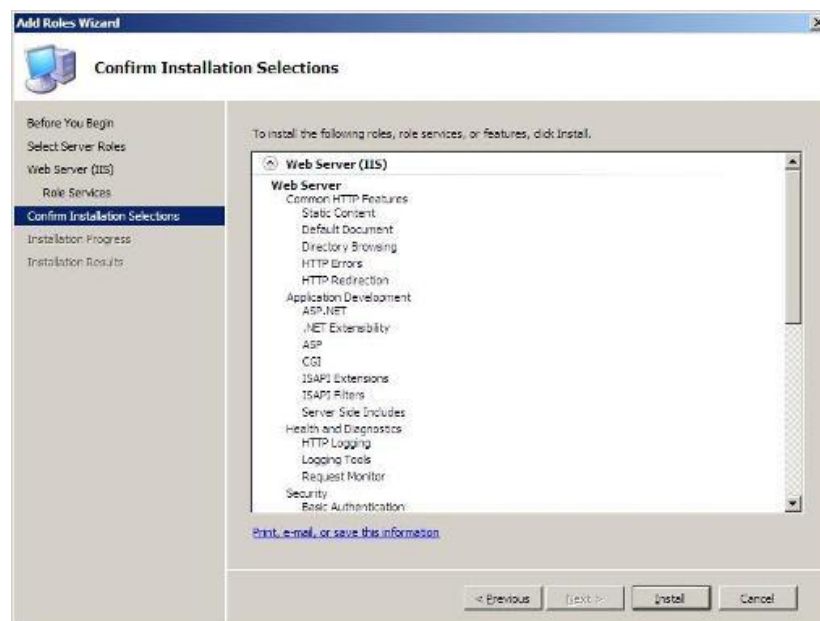
**Note:** The role services selected in this exercise may differ from your requirements. Feel free to explore the descriptions of the role services and select or deselect the features you see fit.



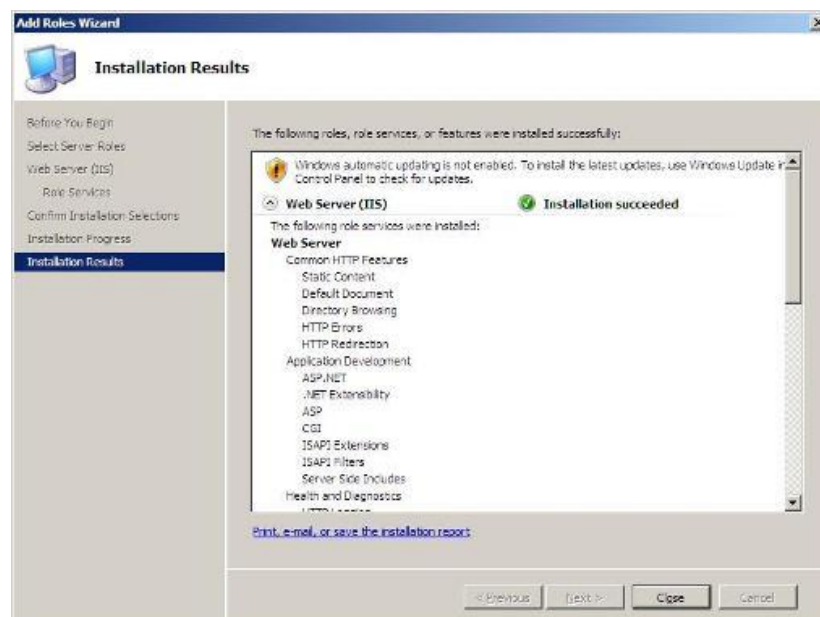
7. After checking the box labeled **Application Development**, you may be prompted to add the .NET Environment, if it is not already installed. Click the **Add Required Features** button to continue selecting role services.



8. Once you've completed selecting the role services to install for your web server, click the **Next** button to proceed.
9. Review the installation selections and confirm them by clicking the **Install** button. The Add Roles Wizard will then perform the installation of the selected role services.



10. When the wizard is finished installing the roles, review the installation results and click the **Close** button to complete the installation.



Feature	Enterprise	Datacenter	Standard	Web	Itanium
ADFS Web Agent	Yes	Yes	Yes	No	No
Directory uIDM	Yes	Yes	Yes	No	No
Desktop Experience	Yes	Yes	Yes	Yes	No
Windows Clustering	Yes	Yes	No	No	Yes
Windows Server Backup	Yes	Yes	Yes	Yes	Yes
Windows Network Load Balancing (WNLB)	Yes	Yes	Yes	Yes	Yes
Simple TCP/IP Services	Yes	Yes	Yes	No	Yes
SMTP	Yes	Yes	Yes	Yes	No
Subsystem for Unix-Based Applications (SUA)	Yes	Yes	Yes	No	Yes
Telnet Client	Yes	Yes	Yes	Yes	Yes
Telnet Server	Yes	Yes	Yes	Yes	Yes
Microsoft Message Queuing (MSMQ)	Yes	Yes	Yes	No	Yes
RPC Over HTTP Proxy	Yes	Yes	Yes	No	Yes
Windows Internet Naming Service (WINS)	Yes	Yes	Yes	No	No
Wireless Client	Yes	Yes	Yes	No	No
Windows System Resource Manager (WSRM)	Yes	Yes	Yes	Yes	Yes
Simple SAN Management	Yes	Yes	Yes	No	No
LPR Port Monitor	Yes	Yes	Yes	No	No
The Windows Foundation Components for WinFX	Yes	Yes	Yes	Yes	Yes
BITS Server Extensions	Yes	Yes	Yes	No	Yes
iSNS Server Service	Yes	Yes	Yes	Yes	No
BitLocker Drive Encryption	Yes	Yes	Yes	No	Yes
Multipath IO	Yes	Yes	Yes	No	Yes
Removable Storage Management	Yes	Yes	Yes	No	Yes
TFTP	Yes	Yes	Yes	No	Yes
SNMP	Yes	Yes	Yes	Yes	Yes
Server Admin Pack	Yes	Yes	Yes	Yes	No
RDC	Yes	Yes	Yes	No	Yes
Peer-to-Peer Name Resolution Protocol	Yes	Yes	Yes	Yes	Yes
Recovery Disk	Yes	Yes	Yes	Yes	Yes
Windows PowerShell	Yes	Yes	Yes	Yes	Yes

#### Windows Server 2008 System Requirements:

This software is intended for evaluation and deployment planning purposes only. If you plan to install the software on your primary computer, it is recommended that you back up your existing data prior to installation.

To use Windows Server 2008, you need:

Component	Requirement
Processor	<ul style="list-style-type: none"> <li>• Minimum: 1 GHz (x86 processor) or 1.4 GHz (x64 processor)</li> <li>• Recommended: 2 GHz or faster</li> </ul> <p><b>Note:</b> An Intel Itanium 2 processor is required for Windows Server 2008 for Itanium-Based Systems.</p>
Memory	<ul style="list-style-type: none"> <li>• Minimum: 512 MB RAM</li> <li>• Recommended: 2 GB RAM or greater</li> <li>• Maximum (32-bit systems): 4 GB (Standard) or 64 GB (Enterprise and Datacenter)</li> <li>• Maximum (64-bit systems): 32 GB (Standard) or 1 TB (Enterprise and Datacenter) or 2 TB (Itanium-Based Systems)</li> <li>• Minimum: 10 GB</li> </ul>
Available Disk Space	<ul style="list-style-type: none"> <li>• Recommended: 40 GB or greater</li> </ul> <p><b>Note:</b> Computers with more than 16 GB of RAM will require more disk space for paging, hibernation, and dump files.</p>
Drive	DVD-ROM drive
Display and Peripherals	<ul style="list-style-type: none"> <li>• Super VGA (800 x 600) or higher-resolution monitor</li> <li>• Keyboard</li> <li>• Microsoft Mouse or compatible pointing device</li> </ul>

Actual requirements will vary based on your system configuration and the applications and features you choose to install. Processor performance is dependent upon not only the clock frequency of the processor, but the number of cores and the size of the processor cache. Disk space requirements for the system partition are approximate. Itanium-based and x64-based operating systems will vary from these disk size estimates. Additional available hard-disk space may be required if you are installing over a network. For more information, see the Windows Server product site.



Minko Software Service Co. LTD



86-13539872669



sales@hkminko.com



computersoftware-systems.com

☎ 18800071200

✉ [sales@hnmimn.com](mailto:sales@hnmimn.com)

🌐 [computerhardware-systems.com](http://computerhardware-systems.com)

Huaqiang North ,Futian district,Shenzhen City,China